

Richmond, Victoria | 10 Dover St

Newly constructed building needs to find a way to quickly meet **BCA Section J** compliance

Film Type: **Titan 07 Xtra**
Size of Job: **500 m²**



Project Task

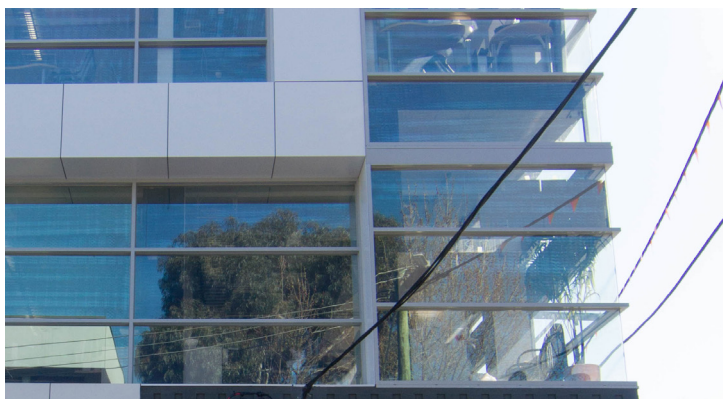
A newly constructed building in Melbourne's inner city suburbs, designed and specified with low emissivity glazing, failed to meet the Building Code of Australia's Section J requirements for energy efficient buildings. Tenants were also struggling to deal with the effects of the glazing, which was providing no shielding against the heat and glare of the direct sun and the HVAC system was not able to cope with demand.

Solution

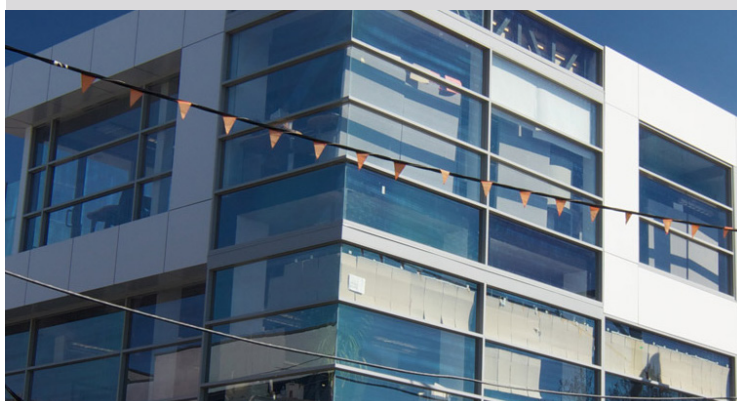
Titan 07 Xtra, a dual reflective film, was installed on the exterior of the building's glazing. The Titan range of films is reflective on the outside but non-reflective on the interior face, allowing for a clearer view at night

Outcome

The building owner and tenant were equally delighted - the building was able to meet Section J compliance, and the tenants were protected from the extreme temperature conditions they were facing.



Before installation: tenants were needing to shield their windows with cardboard and room dividers to protect themselves from the direct sun



energy@hanitapacific.com.au | www.hanitapacific.com.au | www.hanitaenergy.com
Hanita Pacific | Unit 4, 50 Rooks Rd, Nunawading VIC 3131 | T: 1300 456 700 | F: 1300 456 600